

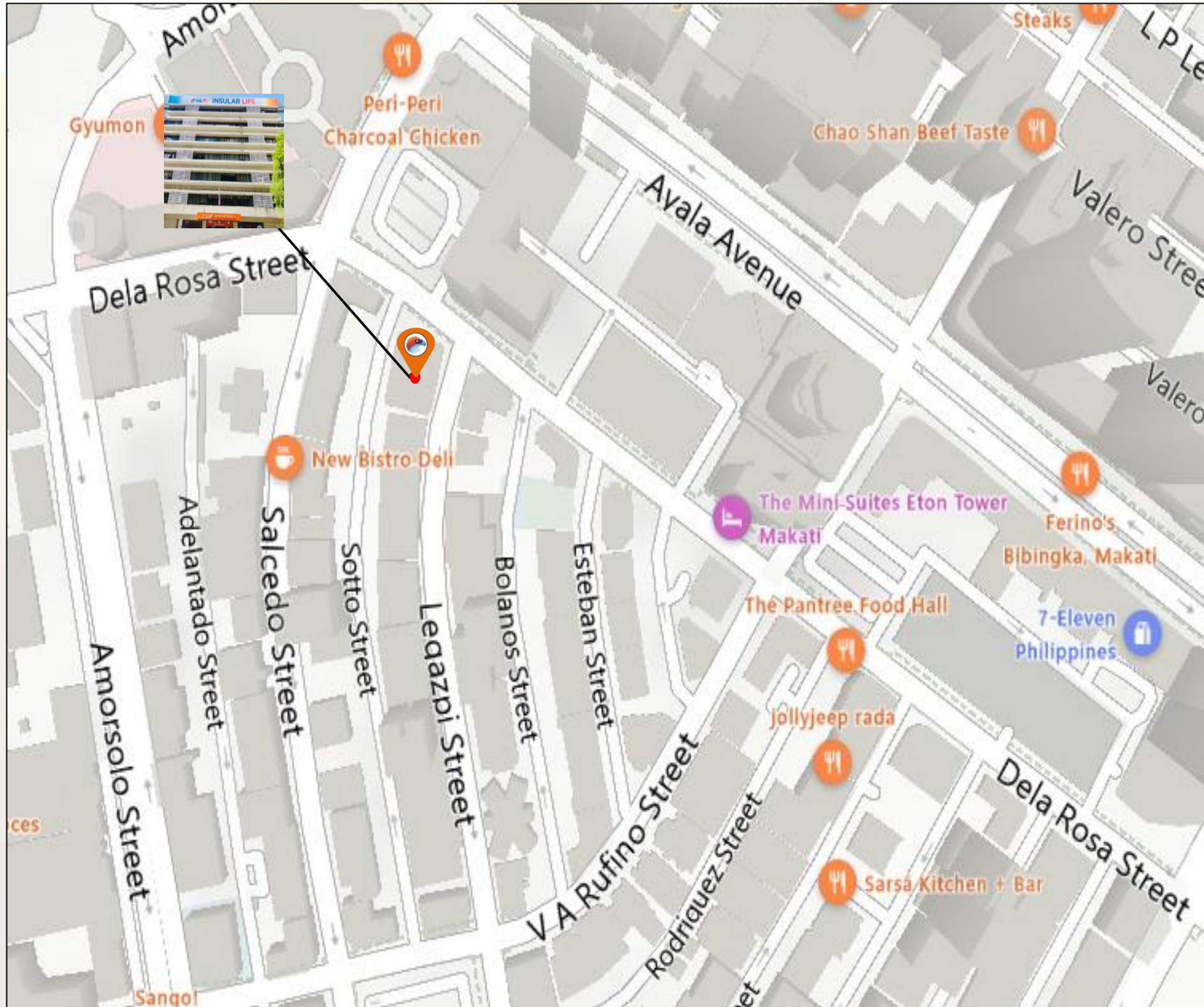
# Insular Health Care Building

Dela Rosa cor. Legazpi Street, Legazpi, Makati City



# Insular Health Care Building

Dela Rosa cor. Legazpi Street, Legazpi, Makati City

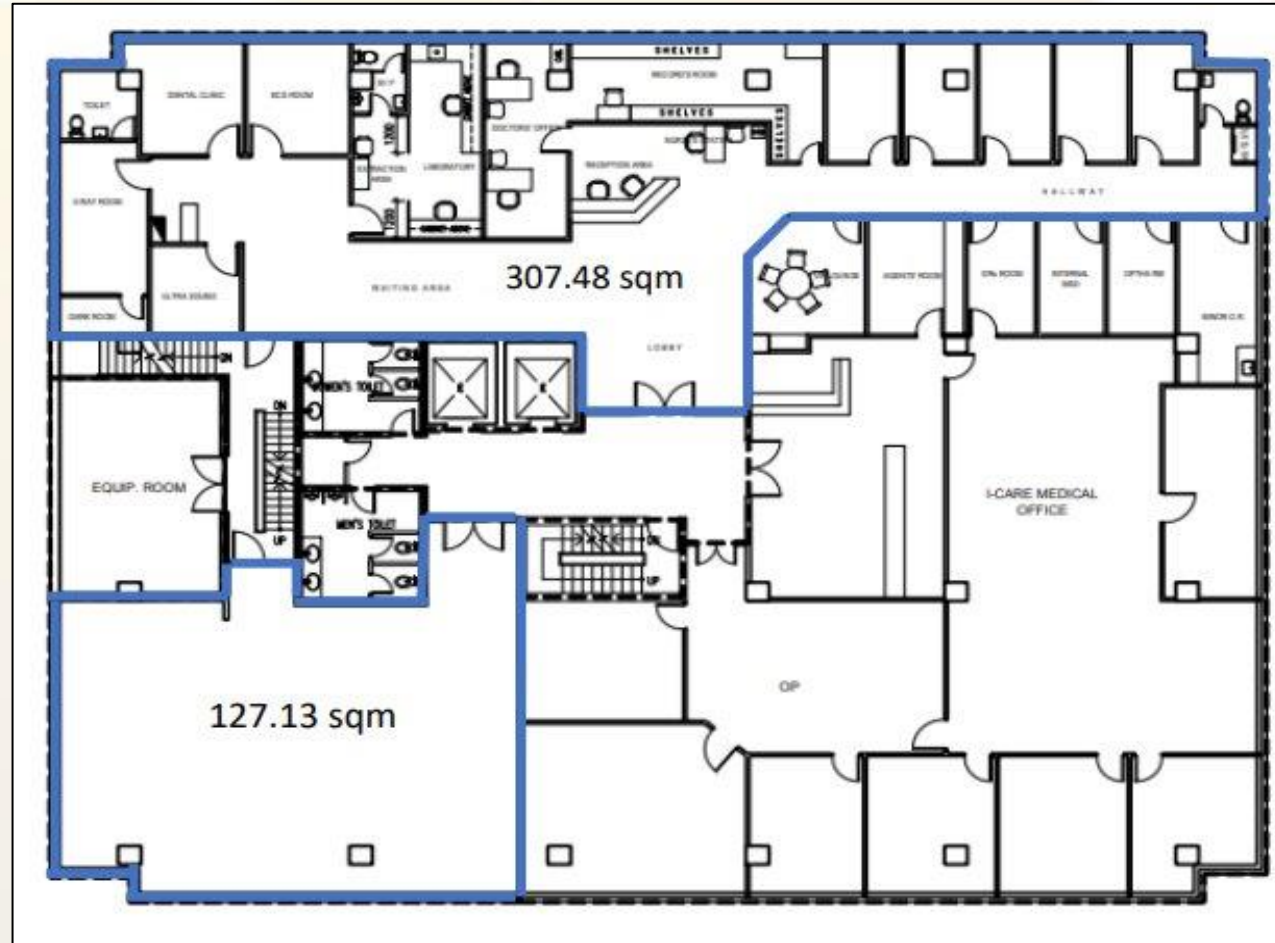


## BUILDING SPECIFICATIONS

Building Grade	Grade B
No. of Floors	7-storey + Roof Deck
Floor Plate	Approx. 860 sqm per floor
Floor Efficiency	83 %
Density Ratio	1 : 9
A / C Systems	Centralized Air-conditioning System
A / C Charges	Aircon Extension (after office hours) 500/hr/wing
Back up power	100 %
Floor to Ceiling Height	2.4 Meters
Parking Allocation	1: 200 sqm
Parking Rate	Open Parking – PHP 5,000/slot Basement Parking- PHP 6,000/slot
Telco Providers	PLDT, Converge, Eastern, Globe and Rise
Amenities	Banks, Coffee Shop and Convenience Store

# Insular Health Care Building

Dela Rosa cor. Legazpi Street, Legazpi, Makati City



Typical Floor Plan

Floor	Area (sqm)	Rent (PHP / sqm / Month)	Handover Condition	Availability
Ground Floor	233.96	PHP 2,500.00	Partially Fitted	May 2025
2 <sup>nd</sup> floor	307.48	PHP 800.00	Partially Fitted	Immediate
6 <sup>th</sup> Floor	368.00	PHP 800.00	Partially Fitted	Immediate

\*CUSA Fee – PHP 104.00 / sqm

# Insular Health Care Building

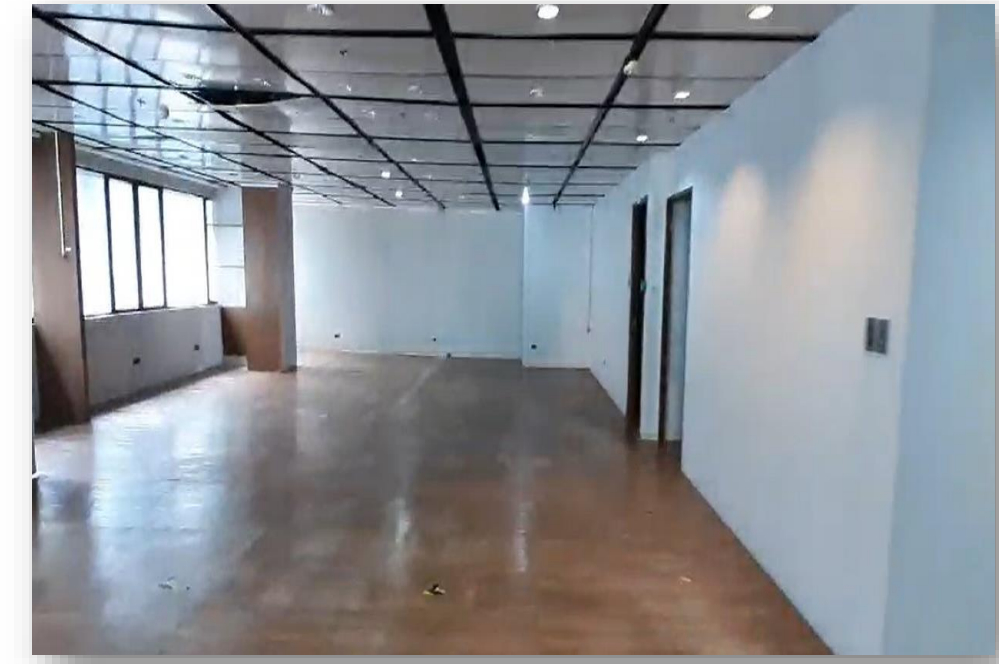
Dela Rosa cor. Legazpi Street, Legazpi, Makati City



Ground Floor (233.96 sqm)



2<sup>nd</sup> Floor (307.48 sqm)



6<sup>th</sup> Floor (368 sqm)

# Insular Health Care Building

Dela Rosa cor. Legazpi Street, Legazpi, Makati City

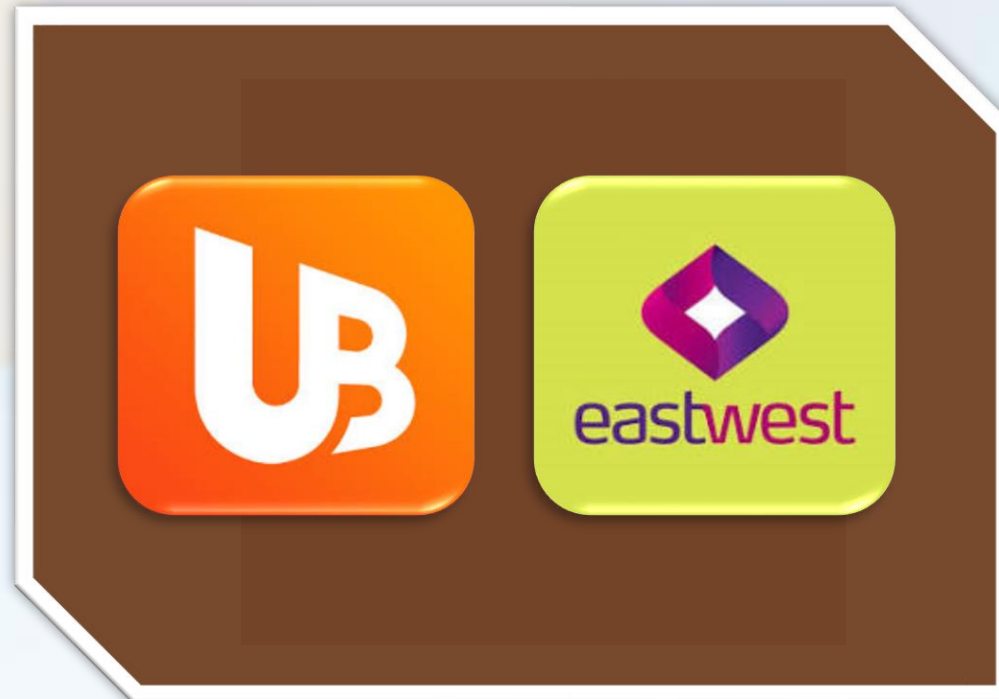
## Amenities:



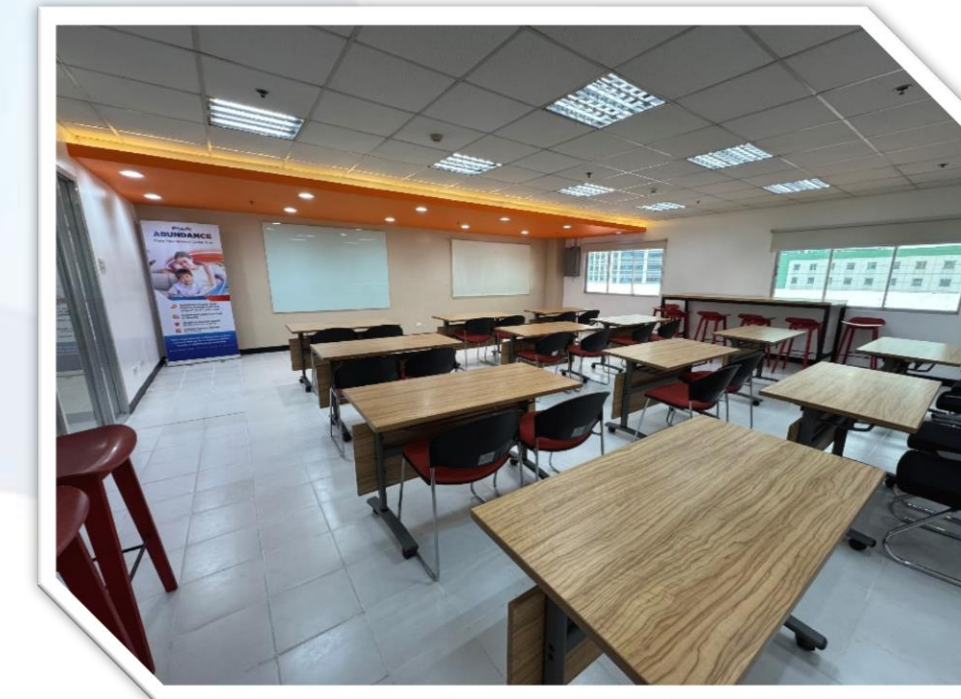
Convenience Store



Coffee Shop



Banks



Training / Conference Room